



# *SMWDC Command Brief*



**29 December 2023**

**THE OVERALL CLASSIFICATION OF THIS BRIEF IS:**

**UNCLASSIFIED**

Disclosure: This information is furnished upon the condition that it or knowledge of its possession will not be disclosed to another nation, and that it will not be used for other than the military purpose for which it is being provided without specific authority from the U.S. Department of the Navy; that individual or corporate proprietary rights contained within, whether patented or not, will be respected; that the information will be provided the same degree of security afforded it by the U.S. Department of Defense. Regardless of any declassification markings, this information may not be downgraded or declassified by a foreign recipient without the written approval of the originating U.S. agency.





# Mission & Lines of Operation



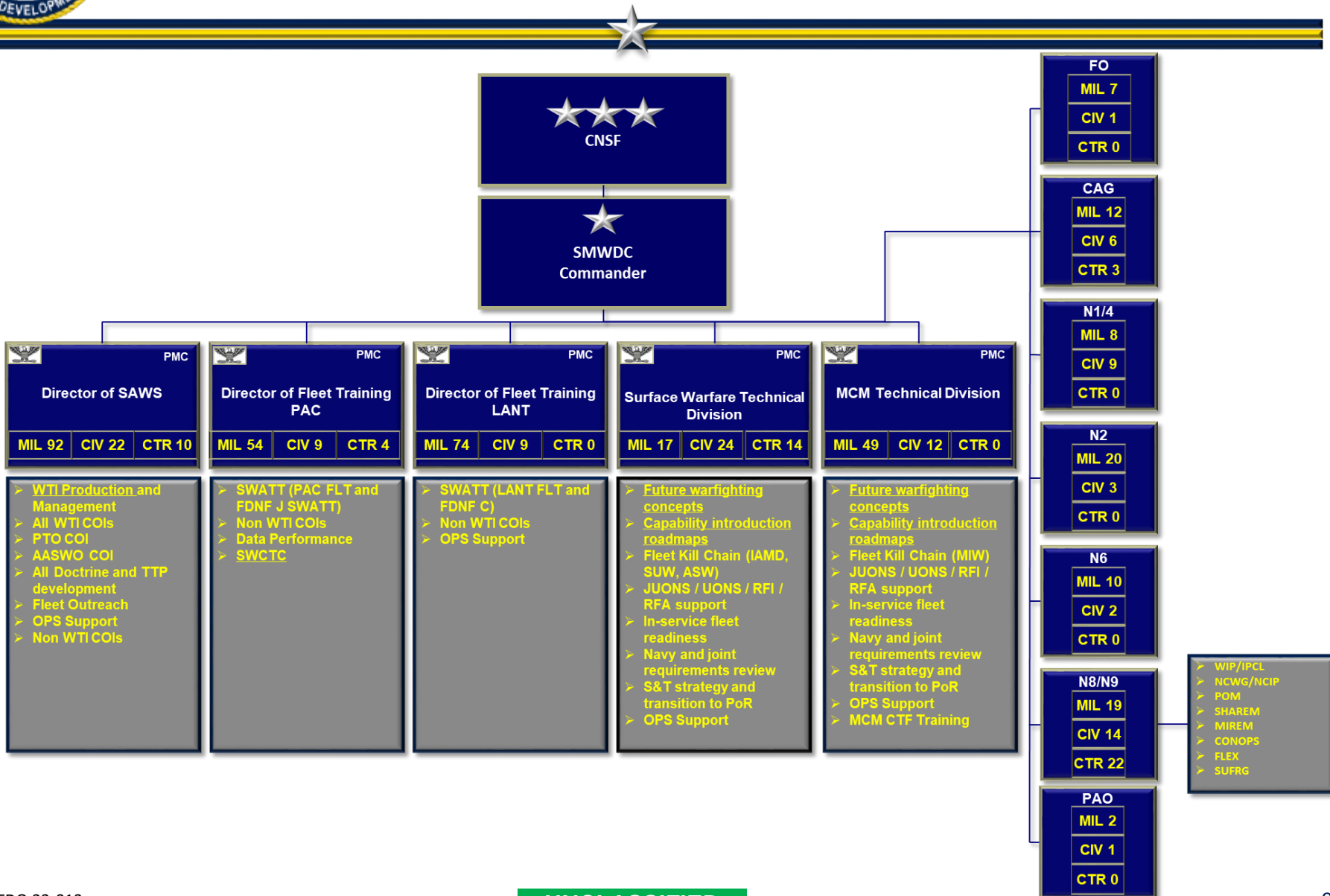
*Mission: Increase the lethality and tactical proficiency of the Surface Force across all domains*



*Tactical Excellence by Design*



# SMWDC Organization





# Warfare Tactics Instructor Warriors, Thinkers, Teachers

## WTIs – Driving the Competitive Edge

- **618 WTIs on Active Duty**
- **WTI candidates chosen via selection boards (six annually) and CO's Red Chip program (one per CO per calendar year)**
- **Four warfare areas – all trained by SAWS:**
  - **AMW – 16.5 week course in Little Creek, VA**
  - **ASW-SUW – 15 week course in San Diego, CA**
  - **IAMD – 18 week course in Dahlgren, VA**
  - **MIW – 31 week course in San Diego and Belgium**
- **Updating COIs tailored/standardized to ~16 week**
- **Produced 121 WTIs in CY23 – most ever!**



## Surface Advanced Warfighting School

- **WTI Production (recruitment – selection – placement – training) under one roof in San Diego, CA**
- **All-domain approach to WTI instruction / TTP production**
- **Standardizes WTI training across patch types**
- **Consistent approach to doctrine and TTP development**
- **Improved integration across warfare areas**
- **All courses moving to San Diego CY24**

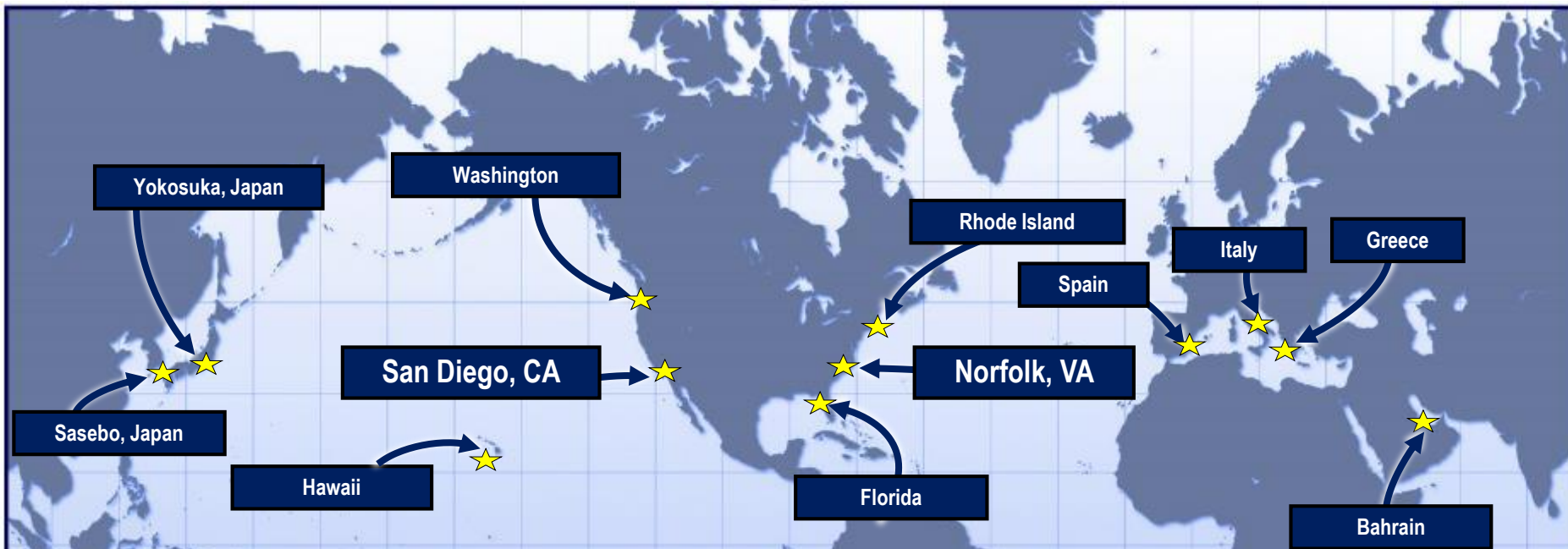


**WTI is Best Preparation for being a Department Head, Executive and Commanding Officer**



UNCLASSIFIED

# WTIs in Demand Around the Globe



- *Production Tours: SMWDC, SCSTC, ATGs, SWSC, TACTRAGRU, CSG 4 /15, EWTGs, Warfare Development Centers*
- *WTIs enhance combat readiness of ships and afloat staffs in CONUS and Forward Deployed*
- *“WTIs with Developers” work alongside industry at PEO IWS in Washington, DC*
- *Eligible for other SWO opportunities – Talent Management, graduate education, sea / shore assignments*
- *SELRES WTIs (28 as of 20JUL23) support SMWDC Lines of Effort from the Reserve Enterprise*

**WTIs Fulfill Assignments Worldwide – Ashore – Enhancing Combat Readiness**

UNCLASSIFIED



# Advanced Tactical Training

## SWATT Today

- *Advanced tactical training at the unit and staff levels*
- *Blue to Blue Integration before C2X*
- *Mentored and trained by SMWDC WTIs*
- *Crawl – Walk – Run*
- *Basic – Intermediate – Advanced Events*
- *Limited LVC / IW Integration*
- *38 SWATTs since 2016 (6 in FY23)*
  - *204 ships in total have conducted SWATT*
- *144 ships conducted LFWAP since 2016*



## SWATT Tomorrow

- *Crawl – Walk – Run*
- *Performance Analysis / Return on Investment*
- *LVC (reps and sets for high end fight)*
- *Revised Advanced Exercises*
- *Close Quarters Maneuvering (CQM)*
- *Cross Warfare Commanders Integration*
- *LFWAP (Offensive and Defensive)*
- *Improved Feedback to Training Audience & Training Teams (ATG, CSCS, CSG4/15)*



**High End Tactical Training for Sailors, Ships, and Warfare Commanders**



# Operational Support



- Provide subject matter expertise through direct reach-back, BMD mission package, or fly-away team support in assigned mission areas as required.
- Provide Operational Plan (OPLAN) or Contingency Plan (CONPLAN) support in assigned mission areas.
- Develop future warfighting concepts based on technical analysis to support current and future weapons system and combat system development and employment.





# Capability Assessments, Experimentation & Requirements



## Warfare Assessment: Identifying Fleet Warfighting Gaps

- WIP - Informs POM process (2-5 yr time frame)
- OPNAV NCWG (8-10 yr outlook)
- Real World Post Event Analysis/ Exercises & Ops



## Experimentation: Testing Solutions to Close Fleet Warfighting Gaps

- POM Advocacy and Issue Submissions
- Fleet Exercise Program
- MIREM/SHAREM
- Unmanned Systems
- Overmatch Surface Advisory Cell

## Closing Warfighting Gaps

- Integrated Priority Capability Lists (IPCL)
- Naval Capabilities Integrated Process Analysis
- CONEMPS Development

## Delivering Increased Fleet Lethality

- DDG1000/BL10/F35/LCS CONEMPS
- High fidelity simulators (CIAT/MMTT)
- Live, Virtual, and Constructive Training
- Unmanned Systems/Counter UxS
- Terminal Defense
- EABO/LOCE
- AI/ML
- Long-Range Fires

## Requirements: Funding to Close Fleet Warfighting Gaps

- Surface & Expeditionary Warfare Training Committee (SEWTC)
- Fleet Training Wholeness (FTW)
- Input to Program Offices & OPNAV via CNSF, FFC, PACFLT
- MILCON
- SURFRG



**Identifying and Closing Lethality Gaps to Maintain our Advantage at Sea**





# *Questions*

